

Music at Saint Stephen's

Saint Stephen's is one of the few remaining parishes to have a Choir of Men & Boys. The Choir primarily sings at the 11:00 AM



service. They also sing Evensong (or a seasonal service of Lessons & Carols) on the first Sunday of the month

during the

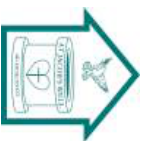
academic year. The Choir's repertory is the same as that of such institutions as Saint Thomas, New York, and King's College, Cambridge. Any boy who enjoys singing can gain admittance to the Choir as early as age seven. Prospective choristers, ages 7 to 12, are welcomed at any time of the year, as are older boys with unbroken voices and some musical experience.

Pastoral Services

The staff of Saint Stephen's provides worship opportunities at many area hospitals, retirement and nursing homes, and hospices. They also provide Visitations of the Sick at individuals' homes upon request. New members are always welcome to join the pastoral service team.

Outreach and Mission

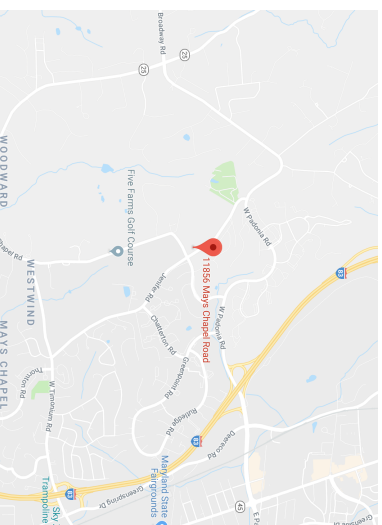
Saint Stephen's supports several charities on a regular basis. On the first Sunday of every month, there is an in-gathering of non-



perishable foodstuffs, cleaning supplies, and the like for **At Jacob's Well**, a mission to the mentally ill homeless in Baltimore City. The offerings at

Choral Evensong regularly go to the **Christ Child Society of Baltimore**. Proceeds from the Silent Auction of goods produced by the Knitting Circle go to the Christ Child Society and to **Heifer, International**, which helps families in developing countries become self-sufficient through the raising of livestock.

Saint Stephen's
Anglican Church
11856 Mays Chapel Rd, Timonium,
MD 21093
(410) 560-6776
ststeve.com



From I-83: Take W. Padonia Rd west. Turn left at Mays Chapel Rd. Turn right to stay on Mays Chapel. After you cross Jenifer Rd, the church is immediately on the right.

From Downtown: Take I-83 to Falls Rd. (The Jones Falls Expressway splits off from I-83 and runs back into Falls Road past I-695). Turn right at W. Seminary Ave (131), and then left on to Mays Chapel Rd. Church is on the left just past the sharp right turn on Mays Chapel Rd. If you get to the stop sign at Jenifer Rd, you just passed us.

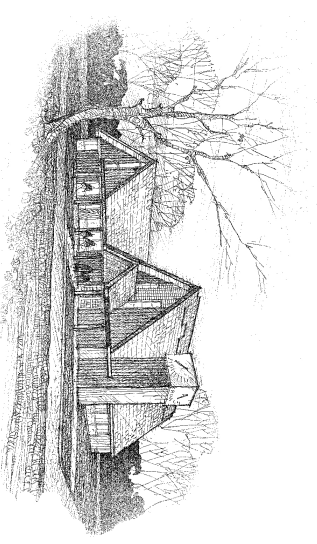
Sunday Services

8:00 AM Said Eucharist
9:15 AM Sung Eucharist
11:00 AM First Sunday: Sung or Choral Eucharist

Other Sundays: Sung or Choral Mattins

(The Choir of Men & Boys sings choral services during the academic year.)

Evensong as announced.



Welcome to Saint Stephen's Anglican Church

11856 Mays Chapel Rd,
Timonium, MD 21093
(410) 560-6776
ststeve.com



The Anglican Church in America

About Us

Saint Stephen's is a "parish in the classical Anglican tradition", but what does that mean? First and foremost, it means that our spiritual life is focused on the Bible, and the confession of Jesus Christ as our Lord and Saviour. We use the King James Version (the "Authorised Version") in our services and our study groups—not just because it's "traditional", but because it's a faithful translation, and not a paraphrase.

Secondly, being a "parish in the classical Anglican tradition" means that our liturgical life is focused on the Book of Common Prayer, specifically the 1928 and 1662 Prayer Books. Saint Stephen's makes full use of the Prayer Book. Holy Communion is featured prominently on our service schedule, of course. But Saint Stephen's is one of the few parishes in the country which still regularly presents the services of Morning Prayer (most Sundays at 11:00 AM) and Evensong (first Sundays of the month during the academic year).



Finally, being a "parish in the classical Anglican tradition" means that we have fun. Our annual Cookie Walk in December, and British Garden Party and Fête in May, are neighbourhood legends. The Fall and Spring Picnics are always well attended and well enjoyed, as are our Summer Suppers.

Please stop by for one of our services or other parochial activities: we think you'll enjoy what you find—and find what you need. God bless.

Parish Life

Saint Stephen's provides a plethora of activities for parishioners, their friends and guests, our neighbours, and visitors from all over.

Perhaps our premiere event is the **British Garden Party and Fête**, held on the first Saturday of May. There's an authentic



Afternoon Tea, a pub booth, a White Elephant sale, a Maypole, races and activities for children, and

an authentic Punch & Judy show. It's not to be missed!

Second only to the Garden Party is the **Cookie Walk**, held on the first Saturday in December.

Dozens of types of homemade cookies are available for sale by the pound, along with jams and jellies, wreaths and greens, and a variety of stocking stuffer gifts.



Parishioners and their friends and guests also gather for two **picnics**—one in September and one in June. Usually featuring a cookout, it's a great opportunity for fellowship.

During the summer, join us for our **Summer Suppers**, held on Wednesdays in July and August. An entrée, salad, and dessert for a price that can't be beat.

The **Knitting Circle** meets Thursday mornings at 10:00 AM. Come learn to knit! The Knitting Circle makes shawls and other



items for residents of local hospices and assisted living facilities. They also produce wonderful articles for the Silent Auction at the Cookie Walk.



Interested in playing bridge? The **Bridge Club** meets Mondays at 6:30 PM. All are welcome, and if you don't know how to play, we'll teach you.

The **Women's Club** meets once a month for lunch at a local restaurant, announced a couple of weeks in advance. Contact the office for details.

Christian Education

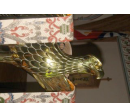
Saint Stephen's has a thriving Sunday School program. Children stay with their parents during the 9:15 AM service until the Sermon Hymn, at which time they leave the sanctuary and move to classroom space in the Parish Hall. They return to the sanctuary at the end of communion for a blessing at the altar rail. (Nursery service is also provided during the 9:15 AM service.)



Saint Stephen's also holds a **Vacation Bible School** for one week during the summer, and **Catechism** classes are available for children interested in Confirmation.

There are a number of opportunities for adult Christian education. There is an ongoing study session Friday mornings at 10:30 AM, in addition to regular classes at 7:00 PM on Mondays and 1:00 PM on Thursdays. During Lent, there is a six-week study session on some appropriate seasonal theme.

Web Presence



Saint Stephen's has a web site, ststephens.com (scan the QR code on the cover). The site has a library of our weekly Newsletter, and sermons in both PDF and podcast form. You can also follow us on Facebook: facebook.com/StStephensMaysChapel. Isaac the Lectern Eagle has his own page, too: facebook.com/isaac.ststephens.

